



**Nepean One Design Regatta  
and Viper 640 Canadian Championship  
June 14-16, 2019  
Nepean Sailing Club  
Lac Deschênes, Ottawa, Canada**

**Presented by  
Jeremy Spilkin and Louis-Philippe Pidgeon, Real Estate Sales  
Representatives at Engel & Völkers Ottawa Central**

#### **SAILING INSTRUCTIONS**

*In all sections the following abbreviations apply:*

*DP: Rules for which the penalties are at the discretion of the Protest Committee;*

*NP: Rules that are not grounds for protest by a boat.*

## **1. RULES**

- 1.1.** The regatta will be governed by the rules as defined in *The Racing Rules of Sailing* (RRS).
- 1.2.** The Martin 16 class will race under single-handed racing format (Martin 16 Class Rule 6.2). Martin 16 Class Rule 6.2.3 will not apply.
- 1.3.** Equipment rules for boats provided by the Organizing Authority are set out in Addendum C.

## **2. ADDITIONAL IDENTIFICATION**

- 2.1.** Every boat of the Viper 640 class shall compete with a mainsail number declared to the Organizing Authority and accepted by the Race Committee by 1500, June 14, or assigned by the Race Committee thereafter.
- 2.2.** Every boat other than a Viper 640 shall compete with a mainsail number declared to the Organizing Authority and accepted by the Race Committee by 0700, June 15, or assigned by the Race Committee thereafter.
- 2.3.** The Race Committee may rescind its acceptance of a mainsail number and assign another to address duplication among accepted sail numbers. This changes RRS Rule G1.1. [DP]
- 2.4.** If a headsail or spinnaker displays a number, it shall be the same number as the mainsail number used on the boat while competing or be struck through prominently. [DP]

## **3. NOTICES TO COMPETITORS**

- 3.1.** Notices to competitors will be posted on the official notice board(s) located at Harbourview Hall, second floor NSC clubhouse.

## **4. CHANGES TO SAILING INSTRUCTIONS**

- 4.1.** Any change to the Sailing Instructions will be posted before 0815 on the day it will take effect, except that any change to the schedule of races will be posted by 2000 on the day before it will take effect.
- 4.2.** The posting of a change to the Sailing Instructions will be signalled ashore.

## **5. SIGNALS MADE ASHORE**

- 5.1.** Signals made ashore will be displayed on the NSC northwest lawn flagpole. Signals may be repeated on the flagpole in the NSC dry sail area.

5.2. When flag AP is displayed ashore, '1 minute' is replaced with 'not less than 30 minutes' in the race signal AP. This changes RRS 'Race Signals'.

**6. SCHEDULE OF RACES**

**6.1. Dates of racing and number of races:**

<i>Class</i>	<i>Dates of Racing</i>	<i>Max. Races per Day</i>	<i>Max. Races for Regatta</i>
<b>Viper 640</b>	June 14	2	10
	June 15, 16	5	
<b>Other keelboats</b>	June 15, 16	5	8
<b>Dinghies</b>	June 15, 16	8	10

6.2. The scheduled time of the warning signal for the first race on June 14 is 1700.

6.3. The scheduled time of the warning signal for the first race June 15 is 1100.

6.4. The scheduled time of the warning signal for the first race June 16 is 1000.

6.5. The Race Committee may alert boats with a sound signal one minute or more before a warning signal is made. [NP]

6.6. On June 16, the last day of the regatta, no warning signal will be made after 1400.

**7. CLASS FLAGS and RACE AREAS**

7.1. Addendum A shows the location of racing areas and the flags used to designate them.

7.2. The race area flag for each course will be displayed on the race committee signal vessel for that course prior to the first warning signal each day. [NP]

**8. THE COURSES**

8.1. The diagrams in Addendum B illustrate the courses, approximate angles between legs, the order in which marks are to be passed, and the side on which each mark is to be left. The text lists all the marks to be rounded and the sequence in which they are to be rounded.

8.2. Where code flag E is displayed no later than the warning signal for a race, the extended course is to be sailed in that race.

8.3. For Alpha and Bravo race areas, the following applies:

- (a) If the offset mark is missing, boats shall sail directly from the windward mark to the leeward gate; and
- (b) If a leeward gate mark is missing, boats shall round the remaining leeward gate mark leaving it to port.
- (c) A missing offset mark or one missing gate mark will not be grounds for redress.

**8.4.** For Charlie Race Area,

- (a) where code flag W is displayed no later than the warning signal for a race, the Windward-Leeward course (Addendum B 2) is to be sailed in that race, or
- (b) where code flag T is displayed no later than the warning signal for a race, the Triangle course (Addendum B 3) is to be sailed in that race.

**9. MARKS**

- 9.1.** Mark 1 will be a large Yellow, Orange, or Green Tetrahedron and its offset mark, if there is one, will be a small tetrahedron of the same colour. The colour of Mark 1 for each start will be displayed on the Race Committee signal vessel no later than the warning signal for that start.
- 9.2.** Mark 1 on Bravo course may display a black band.
- 9.3.** Gate marks in Alpha and Bravo race areas and gybe and leeward marks in Charlie race area will be yellow inflatables.
- 9.4.** The starting and finishing marks will be poles with orange flags.
- 9.5.** New marks, as provided in SI 12.1, will be tetrahedrons of a colour different from the marks they replace.

**10. AREAS THAT ARE OBSTRUCTIONS**

The following areas are designated as obstructions:

- Shoal areas to the east of buoy K1
- Shoal areas to the south west of buoy K3
- Shoal areas to the north of buoy K4
- Shoal areas to the south of buoy K5

**11. THE START**

- 11.1.** A boat starting later than 4 minutes after her starting signal will be scored Did Not Start (DNS) without a hearing. This changes RRS A4 and A5.

- 11.2. The starting line will be between the staff displaying an orange flag on the starting mark and the staff or mast displaying an orange shape, or a Race Committee flag, on the Race Committee signal vessel.

## **12. CHANGE OF THE NEXT LEG OF THE COURSE**

- 12.1. To change an upwind leg of the course in a race, the Race Committee will set marks of a different colour from that of the existing windward mark and indicate their colour. The Race Committee vessel signalling the change of course will display flag C and a flag of the colour of the new mark. This changes RRS 33(a) and (b).
- 12.2. To change a leg of the course other than an upwind leg, the Race Committee will move the original mark (or the finish line) to a new position. The race committee may make these changes without making any signals. This changes RRS 33(a) and (b).

## **13. THE FINISH**

- 13.1. The finishing line will be between the staff displaying an orange flag on the finishing mark and the staff or mast displaying a blue flag on the Race Committee signal vessel.
- 13.2. If the blue flag on the Race Committee vessel is not displayed, the finishing line will be between the staff displaying an orange flag on the finishing mark and the staff or mast displaying an orange shape, or a Race Committee flag, on the Race Committee signal vessel.
- 13.3. SI 13.1 and 13.2 do not apply when RRS 32.2 does.
- 13.4. The Race Committee may, without a hearing, award an On Course Finish (Abbreviated scoring code OCF, which changes RRS A11) to the boat[s] that it anticipates will place either (i) last, (ii) second last and last, or (iii) third last, second last and last, at the finish line in a race.
- 13.5. Should any boat in a race, not having retired nor having been awarded a finishing OCF, not finish within the time limit and be scored DNF, every boat awarded a finishing OCF in that race will be scored DNF. This changes RRS A3.
- 13.6. Where SI 13.3 does not apply, a boat awarded a finishing OCF in a race will be scored points equal to the average anticipated placing of all boats awarded an OCF in that race. This changes RRS A3.

## **14. PENALTY SYSTEM**

For the Martin 16 class, RRS 44.1 is changed so that the Two-Turns Penalty is replaced by the One-Turn Penalty.

## **15. TIME LIMITS**

- 15.1.** For all classes, the time limit to finish is one hour after the start of the race.
- 15.2.** For each race, if no boat completes the first leg of the course within 20 minutes of the start, the race will be abandoned.
- 15.3.** For each race, boats failing to finish within 20 minutes after the first boat sails the course and finishes will be scored Did Not Finish without a hearing. This changes RRS 35, A4 and A5.

## **16. ARBITRATION AND POST-RACE PENALTIES**

Appendix T will apply.

## **17. PROTESTS AND REQUESTS FOR REDRESS**

- 17.1.** Protest forms are available at the protest committee desk located in the NSC clubhouse. Protests and requests for redress or reopening shall be delivered there within the appropriate time limit.
- 17.2.** The display ashore of code Flag R over an area flag, means that the time limit for protests relating to racing in that area has not yet been reached. The hoisting of code flag R and its removal will be accompanied by a sound. The race committee's failure to display Flag R is not grounds for redress.
- 17.3.** For all classes in each area, the protest time limit is no earlier than 60 minutes after the last boat has finished the last race of the day or the Race Committee signals no more racing today, and the earlier of:
  - (a) 120 minutes after the last boat has finished the last race of the day in that race area or the Race Committee signals no more racing today, whichever is later, or
  - (b) 30 minutes after code flag R is displayed over the flag for the area in which the class raced.
- 17.4.** Code Flag R may be displayed ashore without any area flag. It has the meaning of that flag in 17.3 and applies to all classes in all areas.
- 17.5.** Notices will be posted no later than 30 minutes after the protest time limit to inform competitors of hearings in which they are parties or named as witnesses. Hearings will be held in the protest room, located at the NSC club house, as soon as possible after notice has been posted.

- 17.6.** Notices of protests by the race committee or protest committee will be posted to inform boats under RRS rule 61.1(b).
- 17.7.** On the last scheduled day of racing a request for reopening a hearing shall be delivered:
  - (a) within the protest time limit if the requesting party was informed of the decision on the previous day; or
  - (b) no later than 30 minutes after the requesting party was informed of the decision on that day.
- 17.8.** On the last scheduled day of racing, a request for redress arising from a protest committee decision shall be delivered no later than 30 minutes after the decision was posted. This changes RRS rule 62.2.
- 17.9.** Breaches of sailing instructions marked [NP] will not be grounds for protest by a boat. This changes RRS 60.1(a).
- 17.10.** Penalties for breaches of SIs marked [DP] are at the discretion of the Protest committee.

## **18. SCORING**

- 18.1.** The Low Point scoring system of RRS Appendix A will apply.
- 18.2.** One race is required to be completed to constitute a series.
  - (a) When fewer than 5 races have been completed, a boat's series score will be the total of her race scores.
  - (b) When 5 or more races have been completed, a boat's series score will be the total of her race scores excluding her worst score.
- 18.3.** To request correction of an alleged error in posted race or series results, a boat may complete a scoring enquiry form available at the protest committee desk.

## **19. SAFETY REGULATION**

- 19.1.** A boat arriving in its racing area shall identify itself to the Race Committee prior to commencing racing. A boat will not be considered to have complied with this rule until it has received acknowledgement from the Race Committee. [DP]
- 19.2.** A boat that retires from a race or leaves its racing area before racing is completed or abandoned for the day shall notify the Race Committee as soon as possible. [DP]

- 19.3.** A boat returning to race from outside its racing area shall inform the Race Committee of its return prior to recommencing racing. [DP]
- 19.4.** Where code flags N over G are displayed on a course with at least five sounds, all races are abandoned or postponed and all boats are to proceed immediately to harbour. [DP]

## **20. REPLACEMENT OF CREW OR EQUIPMENT**

Substitution of competitors will not be allowed without prior written approval of the Race Committee.

## **21. EQUIPMENT AND MEASUREMENT CHECKS**

A boat or equipment may be inspected at any time for compliance with the class rules and sailing instructions.

## **22. SUPPORT BOATS**

- 22.1.** Team leaders, coaches and other support personnel shall stay outside areas where boats are racing from the time of the preparatory signal for the first class to start until all boats have finished or retired or the race committee signals a postponement, general recall or abandonment. [DP]
- 22.2.** Support and coach vessels shall monitor the VHF radio channel for their area and respond immediately to directions from the race committee. [DP, NP]
- 22.3.** Addendum A lists VHF radio channels in use by the race committee in the racing areas.

## **23. TRASH DISPOSAL**

Trash may be placed aboard support or official boats.

## **24. BERTHING**

Keelboats shall be kept in their assigned places in the harbour. [DP, NP]

## **25. HAUL-OUT RESTRICTIONS**

Keelboats shall not be hauled out during the regatta except with and according to the terms of prior written permission of the race committee. [DP]

## **26. RADIO COMMUNICATION**

Except in an emergency, a boat that is racing shall not make voice or data transmissions and shall not receive voice or data communication that is not available to all boats. [DP]



## **27. PRIZES**

Prizes will be given as follows: 1<sup>st</sup>, 2<sup>nd</sup> and 3<sup>rd</sup> in each fleet. Other prizes may also be awarded.

## **28. DISCLAIMER OF LIABILITY**

Competitors participate in the regatta entirely at their own risk. See RRS 4, Decision to Race. The Organizing Authority will not accept any liability for material damage or personal injury or death sustained in conjunction with or prior to, during, or after the regatta.

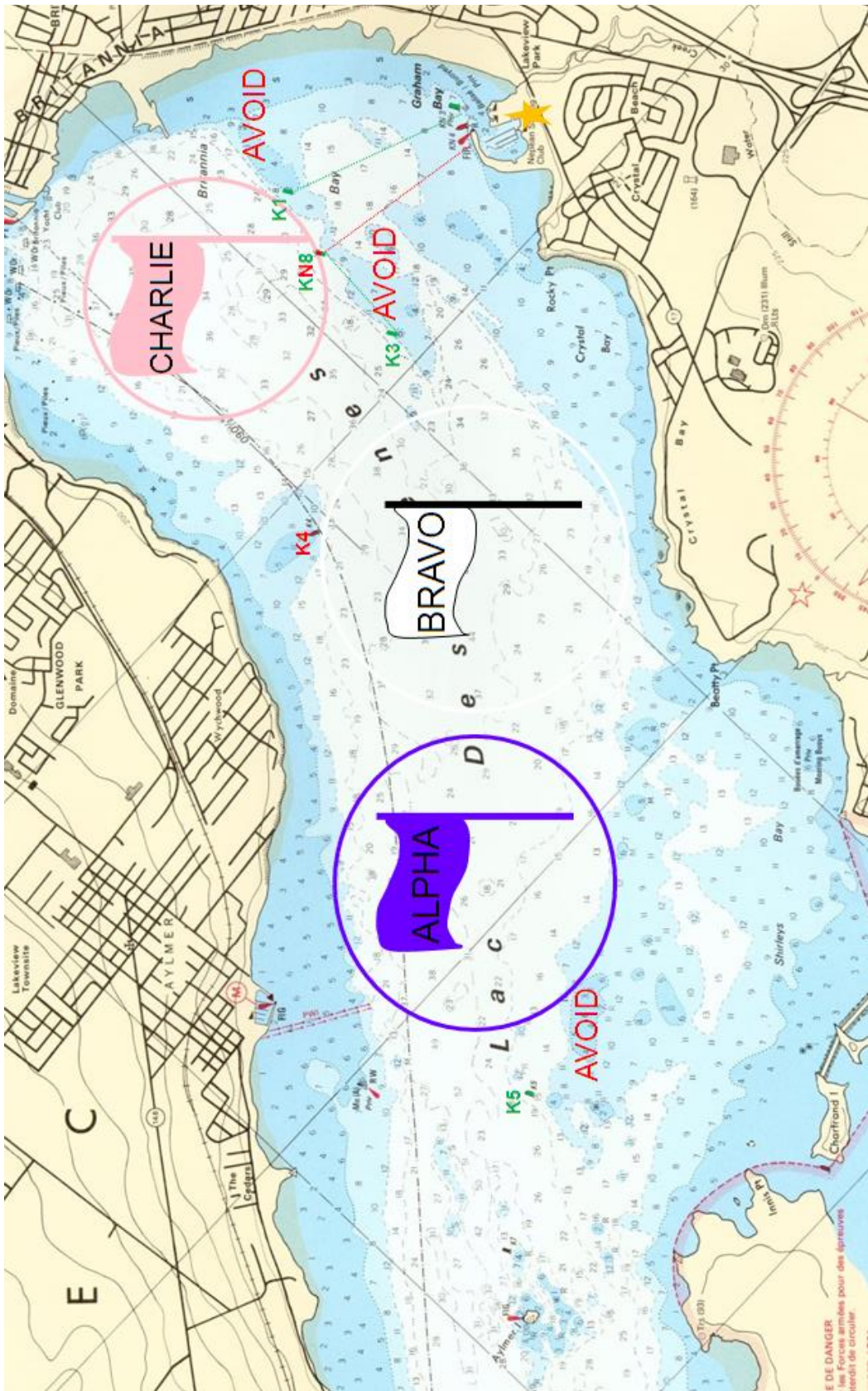
## **29. INSURANCE**

Each participating boat shall be insured with valid third-party liability insurance with a minimum cover of \$1,000,000 CAD per incident or the equivalent.

## **30. RIGHTS TO USE NAME AND LIKENESS**

By participating in this event, competitors automatically grant to the organizing authority and the event sponsors the right, in perpetuity, to make, use, and show, at their discretion, any photography, audio and video recordings, and other reproductions of them made at the venue or on the water from the time of their arrival at the venue, until their final departure, without compensation.

# ADDENDUM A – RACE AREAS

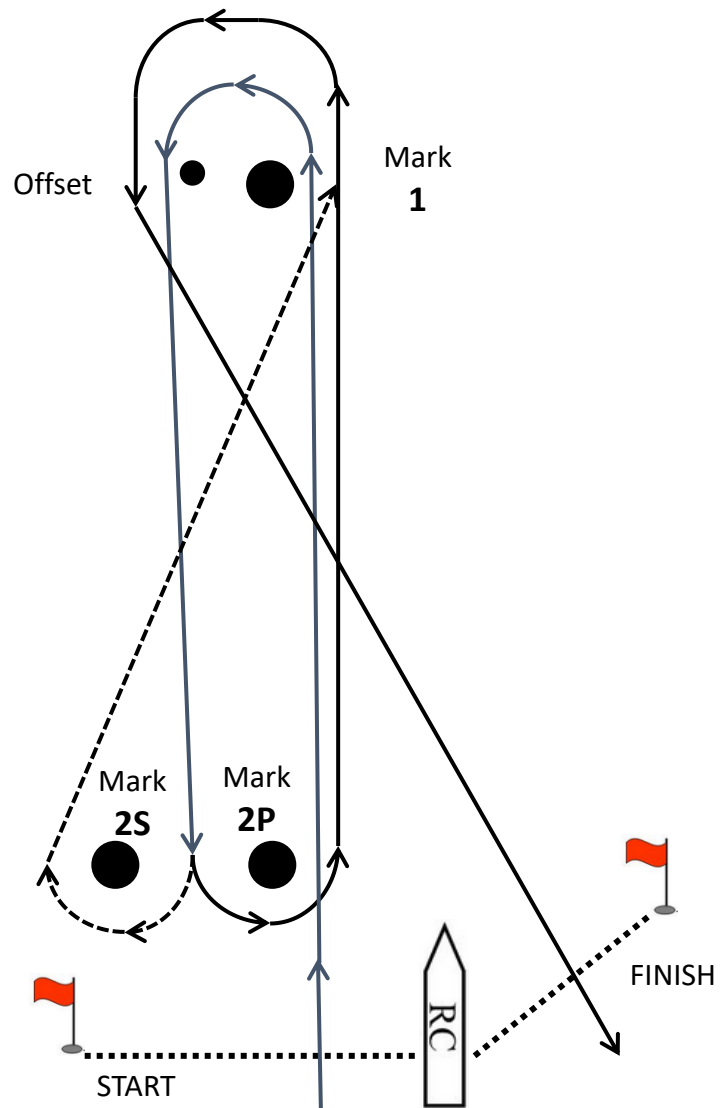


## Race Area Flags and VHF Channels

<i>Area</i>	<i>Flag Colour</i>	<i>VHF Channel</i>
Alpha	Purple	10 (CAN)
Bravo	White	11 (CAN)
Charlie	Pink	12 (CAN)

# ADDENDUM B – COURSES

## B.1 Windward-Leeward Course – ALPHA and BRAVO



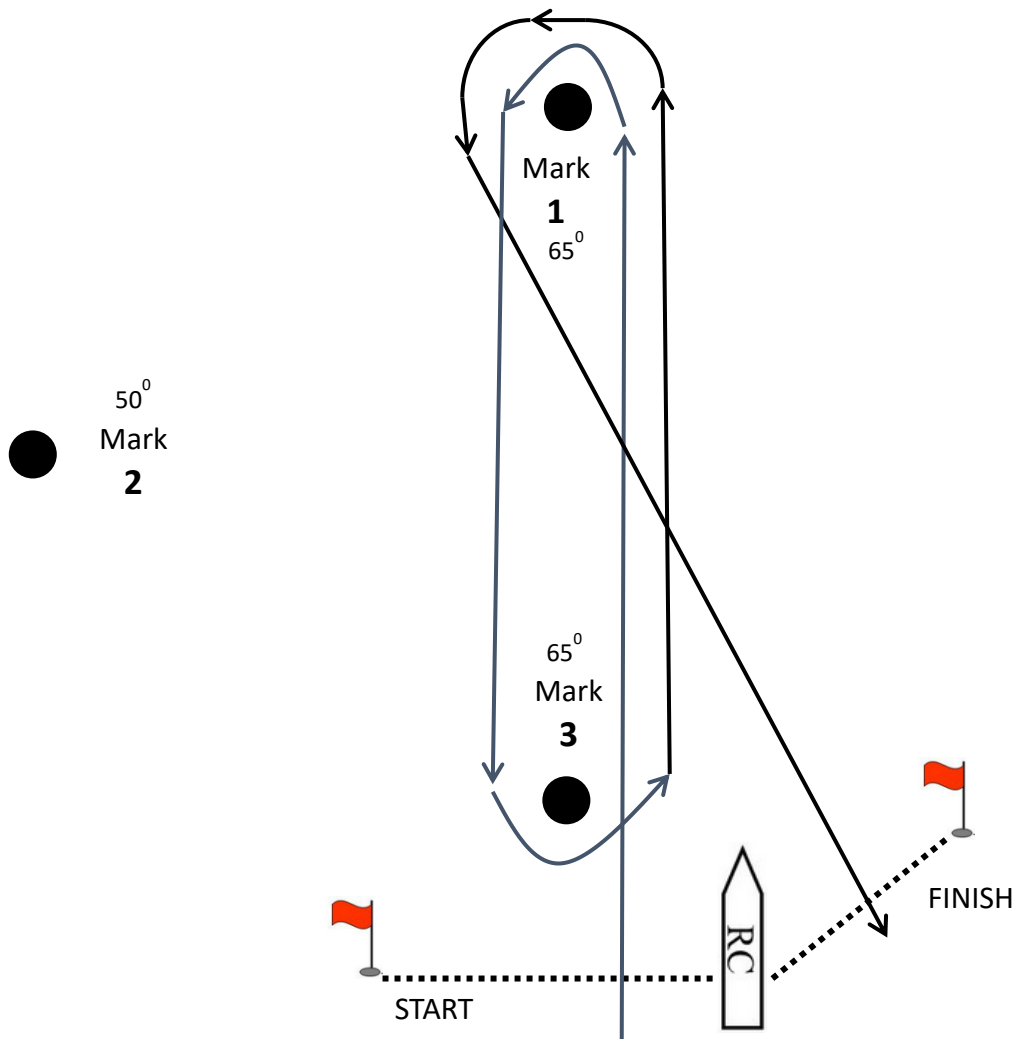
Start – 1 – offset – gate – 1 – offset – Finish

**Extended:** Start – 1 – offset – gate – 1 – offset - gate – 1- offset - Finish

# ADDENDUM B – COURSES continued

## B.2 Windward-Leeward Course – CHARLIE

Code Flag “W”



**All Except M16:**

Start - 1 - 3 - 1 - Finish

**Extended:** Start - 1 - 3 - 1 - 3 - 1 – Finish

**M16:**

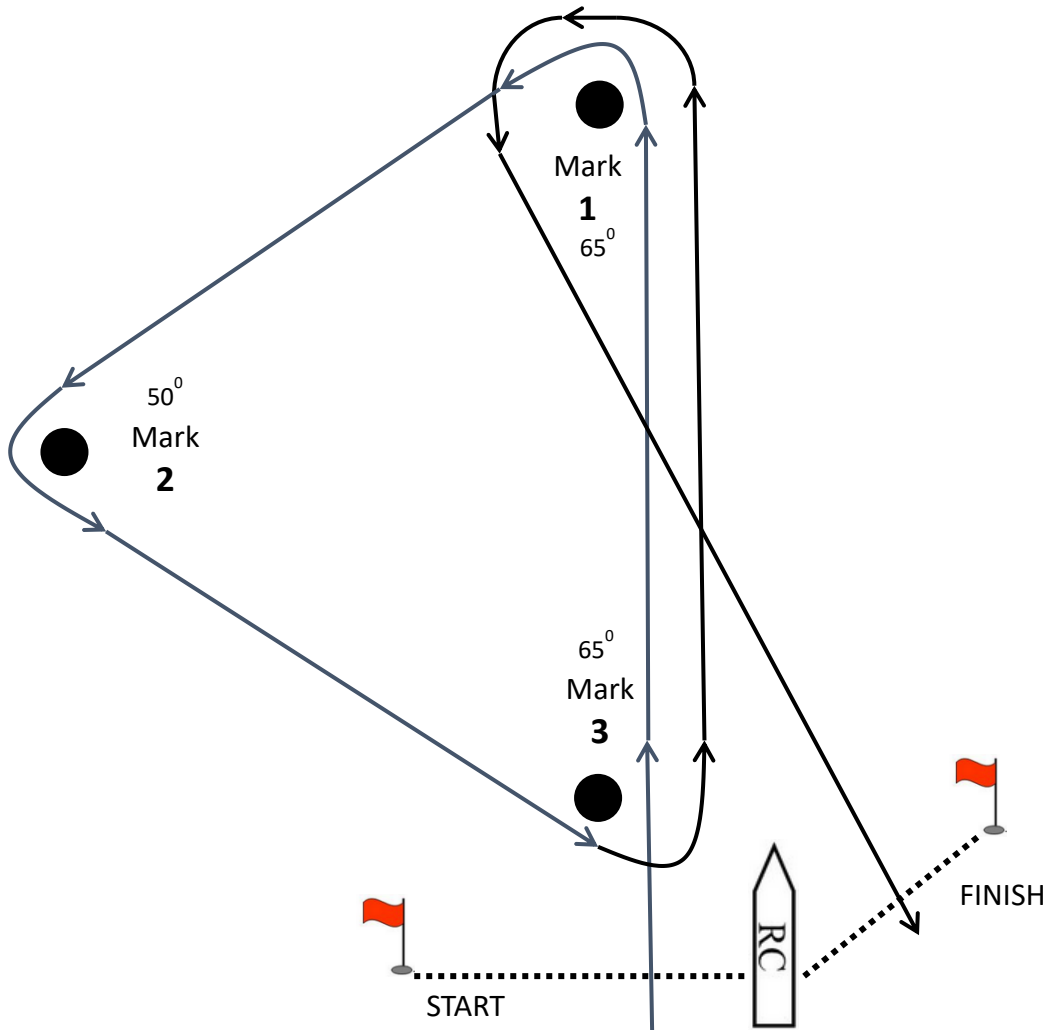
Start - 1 – Finish

**Extended:** Start – 1 – 3 – 1 – Finish

# ADDENDUM B – COURSES continued

## B.3 Triangle Course – CHARLIE

Code Flag T



**[Albacore, Fireball, Laser]**

Start - 1 - 2 - 3 - 1 - Finish

**Extended:** Start - 1 - 2 - 3 - 1 - 3 - 1 – Finish

## **ADDENDUM C - Boats provided by the organizing authority.**

1. Boats may be provided for competitors, who shall not modify them or cause them to be modified in any way except that
  - a) a compass may be tied or taped to the hull or spars;
  - b) wind indicators, including yarn or thread, may be tied or taped anywhere on the boat;
  - c) hulls, centreboards and rudders may be cleaned, but only with water;
  - d) adhesive tape may be used anywhere above the water line; and
  - e) all fittings or equipment designed to be adjusted may be adjusted, provided that the class rules are complied with.
2. All equipment provided with the boat for sailing purposes shall be in the boat while afloat.
3. The penalty for not complying with one of the above instructions will be disqualification from all races sailed in which the instruction was broken.
4. Competitors shall report any damage or loss of equipment, however slight, to the organizing authority's representative immediately after securing the boat ashore. The penalty for breaking this instruction, unless the protest committee is satisfied that the competitor made a determined effort to comply, will be disqualification from the race most recently sailed.
5. Failure or loss of loaned equipment will not be grounds for a request for redress. This changes RRS rule 62.1(a).

## ADDENDUM D Class Area assignments and Flags

Class	Flag	Race Area
Shark	Numeral 3	Alpha
J22	Numeral 7	Alpha
Tanzer 22	Numeral 2	Alpha
Viper-640	Numeral 6	Bravo
J/80	Numeral 8	Bravo
J/24	J24 Class Insignia on white background	Bravo
5o5	Black 5o5 insignia on white background	Bravo
2.4mR	2.4 insignia on a white background	Charlie
Martin 16	M16 logo on white background	Charlie
Fireball	Numeral 1	Charlie
Albacore	"AL"/maple leaf on white background	Charlie
Lasers (Full rig & Radial)	Numeral 5	Charlie